

CHI LAVA®

1" VOLCANIC LAVA CERAMIC HAIRSTYLING IRON

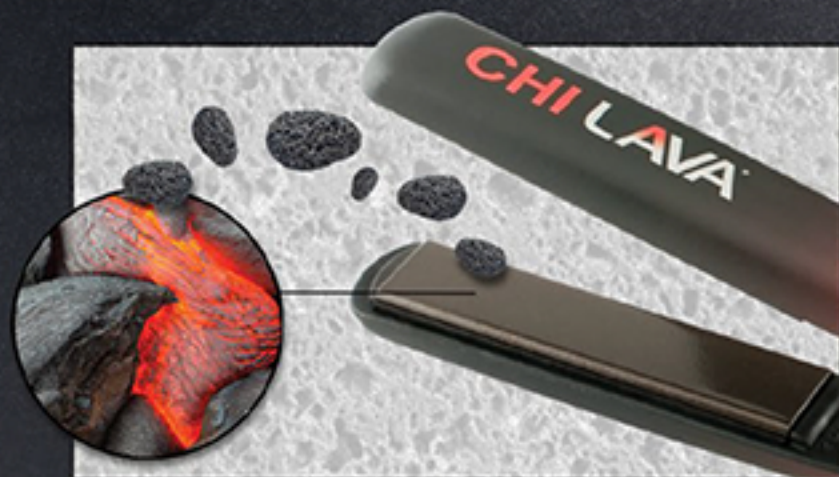
MINERAL STRENGTH, IONIC SHINE

Sourced from some of the most effective heat conducting materials found on earth; volcanic lava combined with the power of CHI ceramic creates smooth, sleek results without the damaging effects of high-heat styling. This innovative combination of elements offers an incredibly smooth styling surface for effortless glide-ability on unruly and coarse hair textures. Heat damage is reduced by the ability to use lower temperature settings than traditional heat styling. With increased durability, lightweight design and extended plate length creating salon quality styles is easier than ever before.



FEATURES

- 1" Volcanic Lava Ceramic Plate
- Digital and Adjustable Temperature Display
- Maximum temperature of up to 450°F / 232°C
- Quick Heat Up
- 11 ft. Cord
- Dual Voltage



VOLCANIC LAVA CERAMIC PLATES

The power of CHI Ceramic infused with volcanic lava derived from lava rocks provides gentle consistent heat during styling. This combination allows styling at lower than normal temperatures producing less damage to the hair while offering smooth, shiny results.

- Volcanic lava powders offer extreme durability
- Minerals help strengthen the hair
- Ions infuse hair with hydration and shine

SKU: 639150

UPC: 633911787656